



WELCOME TO THE

RED ROSE FAMILY

MEMBERS' BOOKLET 2024



NEVER MISS A MOMENT



WELCOME TO THE RED ROSE FAMILY

We look forward to welcoming our existing and new Lancashire Cricket Members to Emirates Old Trafford for the 2024 season.

We hope this guide will provide all the detail you need to help utilise your Membership throughout the season and we encourage Members to make use of the exclusive match day facilities and other benefits. We hope all existing Members will talk passionately about our Club and warmly welcome any new supporters joining the Red Rose Family.

Thank you for being part of our Red Rose Family in 2024.

We hope to have a successful campaign and to celebrate together at the end of the season.

Phil Johnston

Member Relations Manager

CONTENTS

- Welcome2
- Members' Representative Group3
- Member benefits4
- Reciprocal deals5
- Your guide to Emirates Old Trafford6
- Your membership card8
- Your guide to booking tickets9
- Outground information10
- Members' event calendar12
- Accessibility14
- Men's squad - Lancashire Cricket16
- Women's squad - Thunder18
- How to get to Emirates Old Trafford21
- Ground plan22
- Code of conduct and ground regulations24
- 2024 Fixture List25



MEMBERS' REPRESENTATIVE GROUP

The Members' Representative Group (MRG) are a volunteer group who represent Members, constantly challenging and engaging with club officials both during and out of season as well as attending three formal, MRG led meetings each year to raise points that Members have expressed concerns about.

The Members' Representative Group are keen to engage with Members and gain feedback, they can be contacted on email below and are usually in attendance on a match day and at Member events should you prefer to speak in person.

MRG@lancashirecricket.co.uk

MEMBER BENEFITS

YOUR EXCLUSIVE REWARDS...



CLICK HERE

SIGHTSEEING AND ATTRACTIONS

Members have access to discounted days at **Merlin Entertainment venues**, discount at **Sixes Social Cricket** and at **Silverstone Interactive Museum**, please scan the QR code or click the link below for further details.

lancashirecricket.co.uk/claimbenefits

EXCLUSIVE MEMBER AREAS

Members can show their membership card to access the **Members' Suite** in the Pavilion.

Unreserved seating is available on the Pavilion Terrace for Vitality County Championship and Metro Bank One Day Cup games, subject to availability.

THE EDGE

Members and guests can access **The Edge** in the new hotel complex from **11am till 4pm** on Vitality County Championship and Metro Bank One Day Cup fixtures on presentation of membership card. **The Hodgkiss Bar** will remain open until close of play for any further drink purchases. Unreserved seating is available in front of The Edge, available on a first come, first served basis.

10% OFF FOOD AND DRINK

Please **present your membership card** at any Lancashire Cricket food service point or bar including the Hilton Garden Inn bars to receive discount. Please note not all match day vendors are operated by Lancashire Cricket and therefore cannot apply the Member discount.

DISCOUNTED RATES AT OUR HILTON GARDEN INN

You will receive a **guaranteed percentage discount** off the fully flexible Best Available price and get even greater savings when you book early.

To book with the discounted rate, please use the link on the webpage lancashirecricket.co.uk/claimbenefits

CAFFÈ NERO

Members receive **10% discount** on production of 2024 Membership card. Discount only applied at the on-site Emirates Old Trafford Caffè Nero.

RETAIL DISCOUNT

Members receive **10% discount** at the official **Lancashire Cricket store**, please see further details on page 20.



4

RECIPROCAL DEALS

ACCESS FREE COUNTY CRICKET AT OTHER COUNTIES

As a Lancashire Member you will have access to free County Cricket at the other Counties during the 2024 season. To redeem this offer please show your 2024 membership card at ticket office on arrival to ground.

Please note this excludes games that Lancashire are participating in.

DERBYSHIRE

Free entry for **Life, 1864, Prime, Flexi** and **Standard** Members.

ESSEX

Free entry for **Life, 1864, Prime, Flexi** and **Standard** Members.

HAMPSHIRE

Free entry for **Life, 1864, Prime, Flexi** and **Standard** Members.

LEICESTERSHIRE

Free entry for **Life, 1864, Prime, Flexi** and **Standard** Members.

NOTTINGHAMSHIRE

Free entry for **Life, 1864** and **Prime** Members.

SOMERSET

Free entry for **Life, 1864, Prime, Flexi** and **Standard** Members.

WARWICKSHIRE

Free entry for **Life, 1864, Prime, Flexi** and **Standard** Members.

YORKSHIRE

Free entry for **Life, 1864, Prime, Flexi** and **Standard** Members.



5



YOUR GUIDE TO EMIRATES OLD TRAFFORD

MEMBERS' DRESS CODE

Consistent with the **prestige of being a Member of a major cricket club**, the minimum requirement for adult entry to the Members' areas for both Members and guests is neat, casual dress.

Specifically, **non-cricket replica shirts are not permissible and torn jeans or trousers are not allowed**. Tailored shorts and collared shirts (including polo shirts) are acceptable, as are Lancashire replica shirts. Sandals with socks will be accepted.

1864 Members Dress Code

The **1864 Suite dress code is smart casual**. 1864 Members and their guests are requested **not to wear replica kits, t-shirts, blue denim, or shorts**.

We encourage 1864 Members and their guests to wear smart clothing that positively elevates the 1864 Suite match day experience. Please note that we reserve the right to refuse admittance to the 1864 Suite if a Member or their guest is not dressed appropriately.

MATCH DAY GUIDE

For the most up to date information **please scan the QR code below** for the match day guide. Click on the view information button on desired fixture, details are published at least two days prior to fixture.



CLICK HERE

MEMBERS' SUITE

Members have **access to the Members' Suite on production of 2024 membership card**, guests can access on both the Vitality County Championship and Metro Bank One Day Cup games on production of a Members' guest ticket.

Vitality Blast and The Hundred

Members can access the Members' Suite on production of 2024 membership card, only guests seated in the Pavilion Terrace are able to access the Members' Suite.

International Fixtures

Members are able to access the bar and food point in the Members' Suite, we politely ask Members to return to seat after dining/purchasing seats to allow as many Members as possible to experience the exclusive facilities.



6

THE EDGE

Members can **access the Edge and cushioned seating outside on production of their 2024 membership card** on Vitality County Championship and Metro Bank One Day Cup fixtures. Please note The Edge is open from **11am to 4pm** and the outside bar will be open to allow drinks orders outside of these times.



HILTON GARDEN INN

Lunch is available from 12-3pm everyday (subject to availability) for Garden Grille lunch, Members will receive their **10% discount** on production of 2024 Membership card.



MULTI-FAITH ROOM

Multi faith room is **available to all attendees**, this is situated in the **Pavilion tunnel** behind Pavilion reception.



7

YOUR MEMBERSHIP CARD

A GUIDE...

DO I NEED TO BOOK A TICKET?

The Club are happy to inform Members that **all Member match tickets will be loaded onto membership cards for the 2024 season**. This means that if you have claimed a Member ticket for a Men's Vitality County Championship, Metro Bank One Day Cup or Vitality Blast or Women's Thunder match, you won't need to download a digital ticket and can simply present your membership card to enter the ground.

Flexi, Standard and Taster Members will still need to pre-book tickets for all matches as per their membership ticket allocation. Any Member Guest tickets or additional tickets purchased by Members will still require a digital ticket to enter the ground. Taster Members will still require a digital ticket to enter the ground as they are not issued with a membership card.

Roses T20 Vitality Blast fixture is reserved seats, for all remaining Vitality Blast fixtures please book a ticket in your desired stand and select a seat in that stand on arrival to the stadium. Please note the Metro Bank One Day Cup & Vitality Blast knock out stages are not included in the membership; ticket details will be communicated should we qualify for a home fixture.

	VITALITY COUNTY CHAMPIONSHIP	METRO BANK ONE-DAY CUP	VITALITY BLAST	THUNDER	GAMES AT OUTGROUNDS	THE HUNDRED
1864	A	A	A	A	B	D
LIFE AND PRIME	A	A	B	A	B	D
FLEXI	B	B	B	B	B	D
STANDARD	B	B	B	B	B	D
TASTER	C	C	C	C	C	N/A

A do not need to book ticket, access with membership card

B need to book a ticket but will be loaded on to membership card

C need to book a ticket and will be digital ticket issued

D need to book a ticket via The Hundred and will be loaded on The Hundred app

BRING SOMEONE - GUEST TICKETS

Members receive guest tickets to **use throughout the season to bring a friend or family member** along to any day of **Vitality County Championship, Metro Bank Cup or Vitality Blast cricket or Thunder** (excluding Yorkshire Blast and any knockout games). All tickets are allocated to your account and please head to the guide to booking Member tickets on page 9.

	NUMBER OF GUEST TICKETS		NUMBER OF GUEST TICKETS
1864	4	FLEXI	2
LIFE AND PRIME	4	STANDARD	1

8

GUIDE TO BOOKING TICKETS

Visit lancashirecricket.co.uk/memberportal

- 1 Log in to your existing ticketing account (please use the **'FORGOTTEN YOUR PASSWORD?'** option if you are unsure of your log in details).
- 2 Scroll down the front page to find your **desired format of cricket** (Vitality Blast, Vitality County Championship, Metro Bank One Day Cup and Thunder).
- 3 The next five days of play in each competition are listed on the home screen beneath the relevant headers as above. You can **view matches at later dates** by using the arrow on the right hand side of the screen.
- 4 Once you have found your desired day of play, **click on the date to open the ticket screen** for that particular day of play.
- 5 Scroll down the screen to find your **preferred stand** to view from for that day.
- 6 Find the **'Member Ticket'** tariff within that area, and select your desired number of member tickets (one ticket per member, per day) then scroll down and select **'Add to Basket'**.
- 7 The next screen will confirm the tickets that you have added to your basket. If you intend to book any further tickets, select **'Continue Shopping'** to return to the ticketing home screen or alternatively click **'BUY NOW'**.
- 8 On the **'Delivery method'** screen, select **'Member Card'**. Select **'Continue'**.
- 9 On the **'Order Summary'** screen, you will need to select the relevant members as applicable for each ticket within your basket (this can be yourself on each ticket if this is across multiple days).
- 10 Scroll down and tick the **'I have read and accepted the Club's terms and conditions and the Code of Conduct'** and then select **'COMPLETE YOUR ORDER'**.
- 11 You will receive a **confirmation e-mail** with details of your booking and your membership card will be valid for use at the gate on matchday.
- 12 Member guest tickets can be claimed in the same manner as above; select **'Member Guest'** tariff instead of **'Member Ticket'** and the delivery methods will be available as the Lancashire Cricket Tickets app or as print at home.
- 13 Tickets for The Hundred are processed via the ECB ticketing channels. Members will receive an e-mail with instructions on how to claim any relevant member tickets for these matches.

UPGRADING TO THE CLUB SUITE MIDDLE BALCONY (on level 2 of Pavilion)

- To book an upgrade to the Club Suite Middle Balcony please **follow steps 1-4** on the guide to booking tickets.
- Scroll down to **'Club Suite'** seat category and add **'Member Ticket'** for a Member or **'Member guest'** if using one of your guest allowance. There is also an option to pay £20, including admission and Club Suite Middle Balcony upgrade, for a Member's paying guest.
- It will cost £5 to upgrade per Member, per day.
- Guest tickets will be permitted access upon paying the £5 upgrade.
- We advise Members to book in advance as capacity will be limited for certain days.
- Access will be added to Member's card. Please ensure that you retain your booking confirmation, detailing your seat information, for use on the day. Guest tickets and paying guest tickets will be distributed via Print at Home or Lancashire Cricket Tickets app as relevant to the option selected at checkout.

For any Members who are unable to book online, need to request a new Membership card or require any further assistance please email Membership@lancashirecricket.co.uk or call **0161 868 6868** and select **option 1**.

9



YOUR GUIDE TO FIRST TEAM

OUTGROUND INFORMATION

Please remember to book a ticket to any of the outground games you wish to attend.

BLACKPOOL CRICKET CLUB

West Park Drive
Blackpool FY3 9EQ

Lancashire v Durham
Friday 17 to Monday 20 May 2024



Lancashire v Kent Spitfires
Sunday 28 July 2024



Thunder v Sunrisers
Friday 7 June 2024



Thunder v South East Stars
Sunday 7 July 2024



Access to Pavilion

On presentation of membership card.

Seating

Loose seating is available around the ground and an accessible seating area will be available. Please contact stewarding team on arrival.

1864 Seating

1864 Members will have access to seating in front of hospitality marquee.

Car Parking

Please contact the ticket office for Blue Badge enquiries, general parking details will be published in the match day guide prior to fixture.

SEDBERGH SCHOOL

Station Road
Sedburgh LA10 5HG

Lancashire v Durham
Wednesday 24 July 2024



Access to the Queens Hall

Members will have access on production of membership card to purchase hot drinks and use of toilets.

Seating

Loose seating is available around the ground and an accessible seating area will be available. Please contact stewarding team on arrival.

1864 Seating

There will be a designated area pitch side.

Car Parking

Please contact the ticket office for Blue Badge enquiries, general parking details will be published in the match day guide prior to fixture.

SOUTHPORT & BIRKDALE CC

Trafalgar Road, Birkdale
Southport PR8 2HF

Lancashire v Nottinghamshire
Sunday 30 June to Wednesday 3 July 2024



Access to Pavilion

On presentation of membership card.

Seating

Loose seating is available around the ground and an accessible seating area will be available. Please contact stewarding team on arrival.

1864 Seating

There will be a designated area in front of the Pavilion.

Car Parking

Please contact the ticket office for Blue Badge enquiries, general parking details will be published in the match day guide prior to fixture.

SALE CRICKET CLUB

Rockwood, 39 Clarendon Road
Sale M33 2DE

Thunder v Sunrisers
Wednesday 24 April



Thunder v The Blaze
Wednesday 4 September



Access to Pavilion

On presentation of membership card.
Bar on first floor, accessible via stairs or lift.

Seating

Loose seating is available around the ground and an accessible seating area is available around the ground. Please contact stewarding team on arrival.

Car Parking

Car parking is available on Dane Road Clarendon Crescent. Accessible parking available on site.

MEMBER EVENTS CALENDAR

MAY

- Sunday 5** Former Players' Q&A (lunch break) in Members' Suite
- Thursday 30** Annual General Meeting

JUNE

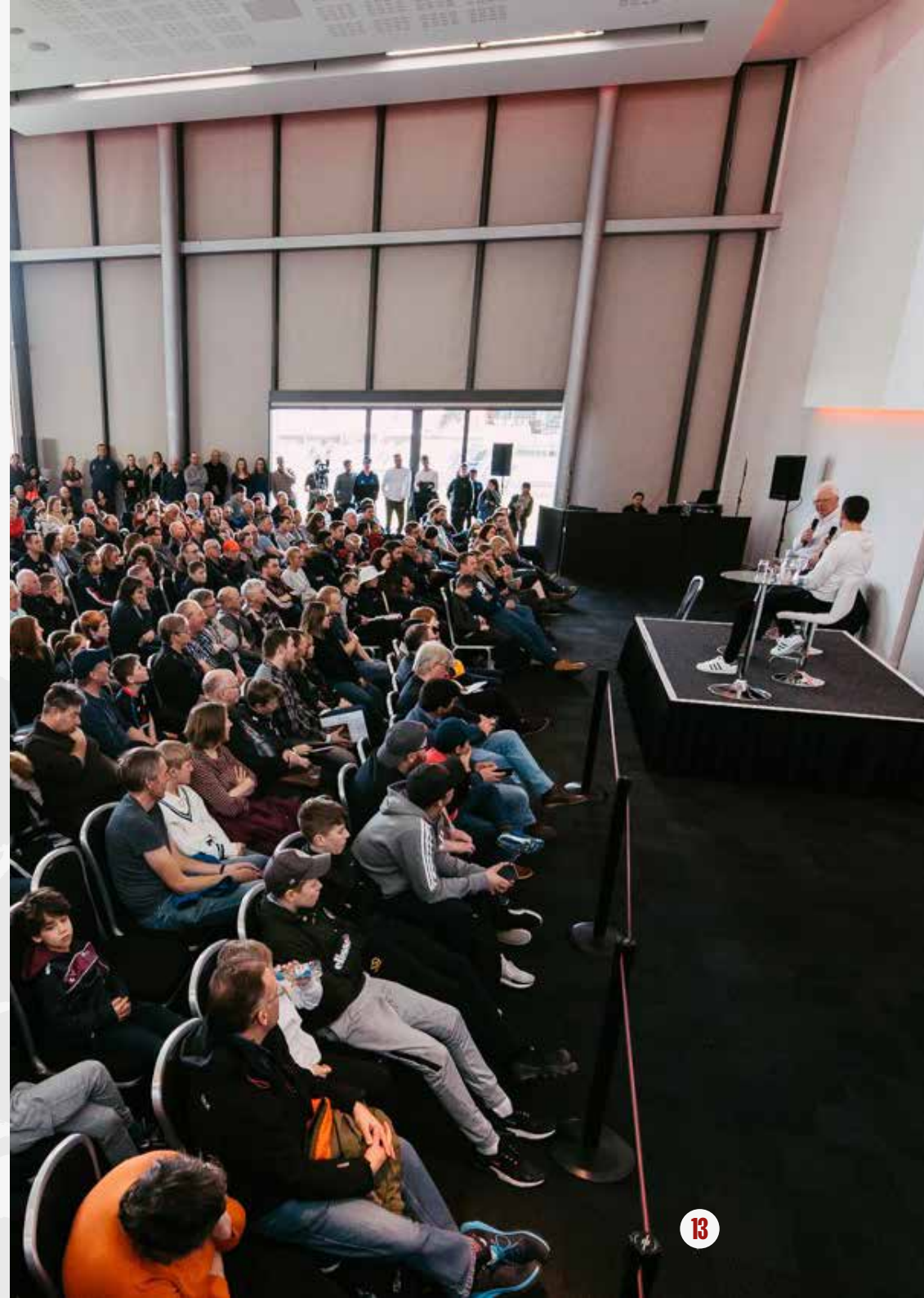
- Sunday 2** Members' Forum (10.30am)
- Friday 7** Former Players' Q&A (in between games) in Members' Suite

AUGUST

- Thursday 8** Members' Forum (30 minutes after stumps)

NOVEMBER

- Friday 8** Cricket Coffee Morning (10am), Members' Forum (12pm)





EMIRATES OLD TRAFFORD ACCESSIBILITY

ACCESSIBLE SEATING AREA*

The Edge

Six wheelchair spaces and six carer seats.

Stand B

Eight wheelchair spaces, eight carer seats and accessible seating at the front of the stand.

Stand C

Nine wheelchair spaces, nine carer seats and accessible seating at the front of the stand.

Stand E

Nine wheelchair spaces, nine carer seats and accessible seating at the back of the stand, accessible via the lift in The Point.

Pavilion Terrace

We have space for up to five wheelchairs and five carer seats.

CHANGING PLACES

Our changing places facility will be available at the back of Stand E. Access is via radar key, our stewards have access to a radar key if you need help with access.

TOILETS

Members Pavilion

Accessible toilet situated on level 1 (Members Pavilion), level 2 (Club Suite Middle Balcony) and level 3 (1864 Suite).

Stand B

Accessible toilet at the back of B2.

Stand C

Accessible toilet at the back of C5.

Stand E

Accessible toilet at the back of E3 and in The Point on level 1 and access via door to atrium bar.

Please note the toilet can only be accessed with a radar key, if you require help please contact the nearest steward.

ASSISTANCE DOGS

Assistance dogs are permitted into Emirates Old Trafford and Lancashire outground venues.

SENSORY ROOM

We have now opened our private pitch-facing Sensory Room, located in the Player and Media Centre of Emirates Old Trafford.

The room can hold a maximum of eight persons and is available for application by any existing match ticket holder at a £5 per person upgrade that includes an on-site car park space. The room can be utilised to watch the whole match or as a drop-in whenever necessary.

Due to the expected popularity of this room we may have to run a ballot to determine who has access per match. If your request is successful, you will be contacted by the Club and the upgrade tickets will be reserved for you to pay online.

For further details please click link below:

[lancashirecricket.co.uk/
tickets/sensory-room](https://lancashirecricket.co.uk/tickets/sensory-room)

LANCASHIRE CRICKET MEN'S SQUAD



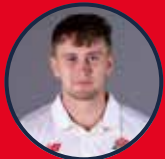
**KEATON
JENNINGS**

Captain LHB, RAM
Johannesburg, South Africa



**JAMES
ANDERSON OBE**

LHB, RAFM
Burnley, England



**TOM
ASPINWALL**

RHB, RAM
Lancaster, England



**TOM
BAILEY**

RHB, RAFM
Preston, England



**GEORGE
BALDERSON**

LHB, RAM
Manchester, England



**GEORGE
BELL**

RHB, WICKETKEEPER
Manchester, England



**JACK
BLATHERWICK**

RHB, RAFM
Nottingham, England



**JOSH
BOHANNON**

RHB, RAM
Bolton, England



**JOSH
BOYDEN**

LHB, LAMF
Chorley, England



**TOM
BRUCE**

RHB, RAOB
Te Kuiti, New Zealand



**JOS
BUTTLER OBE**

RHB, WICKETKEEPER
Taunton, England



**STEVEN
CROFT**

RHB, RAOS
Blackpool, England



**TOM
HARTLEY**

LHB, SLAO
Ormskirk, England



**MATTHEW
HURST**

RHB, WICKETKEEPER
Billinge, England



**GEORGE
LAVELLE**

RHB, WICKETKEEPER
Ormskirk, England



**LIAM
LIVINGSTONE**

RHB, RALS/OS
Barrow-In-Furness, England



**NATHAN
LYON**

RHB, RAOB
Young, Australia



**SAQIB
MAHMOOD**

RHB, RAFM
Birmingham, England



**JACK
MORLEY**

LHB, SLAS
Rochdale, England



**PHIL
SALT**

RHB, WICKETKEEPER
Bodelwyddan Wales



**HARRY
SINGH**

RHB, RAOB
Blackburn, England



**MITCHELL
STANLEY**

RHB, RAFM
Telford, England



**LUKE
WELLS**

LHB, RAS
Eastbourne, England



**WILL
WILLIAMS**

RHB, RAFM
Christchurch, New Zealand



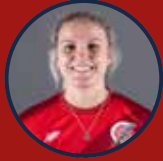
**LUKE
WOOD**

LHB, LAMF
Sheffield, England





THUNDER WOMEN'S SQUAD



**ELLIE
THRELKELD**

Captain, RHB, WICKETKEEPER
Knowsley, England



**MAHIKA
GAUR**

RHB, LF
Reading, England



**AILSA
LISTER**

RHB
Elgin, Scotland



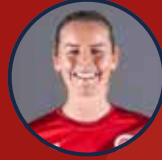
**HANNAH
RAINEY**

RHB, RM
London, England



**OLIVIA
BELL**

RHB, OS
Stockport, England



**PHOEBE
GRAHAM**

RHB, RF
Steeton, England



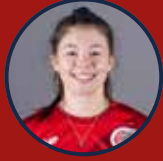
**FI
MORRIS**

RHB, OS
Reading, England



**SEREN
SMALE**

RHB
Wrexham, Wales



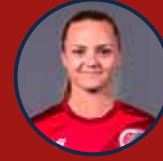
**ALICE
CLARKE**

LHB, WICKETKEEPER
Blackburn, England



**LIBERTY
HEAP**

RHB, OS
Burnley, England



**SOPHIE
MORRIS**

RHB, SLA
Wirral, England



**NAOMI
DATTANI**

RHB, RM
London, England



**DANIELLE
COLLINS**

LHB, RMF
Bury, England



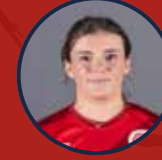
**LAURA
JACKSON**

RHB, RM
Ormskirk, England



**TARA
NORRIS**

LHB, LM
Philadelphia, USA



**DAISY
MULLAN**

RHB, SRA
Bolton, England



**KATE
CROSS**

RHB, RMF
Manchester, England



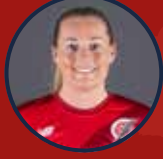
**HANNAH
JONES**

RHB, SLA
Manchester, England



**SHACHI
PAI**

RHB, RM
Mumbai, India



**SOPHIE
ECCLESTONE**

RHB, SLA
Chester, England



**EMMA
LAMB**

RHB, RM
Fulwood, England



Members get
10% OFF
in the Lancashire
Cricket Official Store

MORE THAN A ROSE



CLICK HERE



As a Lancashire Cricket member, you are entitled to **10% off in the Lancashire Cricket Official Store.** To use your discount online, please use the code **'LCMEMBER24'** at checkout. When shopping at Emirates Old Trafford, please show your membership card at checkout to redeem your discount.



HOW TO GET TO EMIRATES OLD TRAFFORD

GETTING TO THE GROUND

We encourage Members, who are able to, to leave their car at home and use public transport wherever possible.

METROLINK

The nearest stop is **Old Trafford**, this is at the back of **stand B and at end of Brian Statham Way**, the tram is serviced on the Altrincham line, you can access Old Trafford from other lines by changing at Trafford Bar and Cornbrook.

There are local park and ride station which include **Brooklands, Sale Waterpark and Stretford.** For further details please see link below.

tfgm.com/ways-to-travel/park-and-ride

Please remember to purchase ticket or tap on prior to boarding to avoid a penalty fare.

CYCLING

Emirates Old Trafford is easy to get to by bike with **cycle path leading up to ground on Talbot Road** from either end of city. The bike rack is situated at the back of The Point, please note that all bikes are left at their owners' risk and we advise bringing a bike lock to secure to rack.

CAR PARKING

Vitality County Championship and Metro Bank Cup Seasonal passes are available to purchase which covers access to the Vitality County Championship and Metro Bank One Day Cup fixtures at Emirates Old Trafford.

Daily parking (including blue badge) will be available on a first come first serve basis at Members rate of **£6 per day**, parking payment can be made at the Members bar or Pavilion reception.

VITALITY BLAST, THUNDER, THE HUNDRED AND INTERNATIONAL FIXTURES

We have a limited number of spaces for **Blue Badge holders**, these can be booked prior to each fixture via link below or by calling the membership team on **0161 868 6868** and select **option 1.**

For advance booking we recommend booking via the Your Parking Space website:

yourparkingspace.co.uk

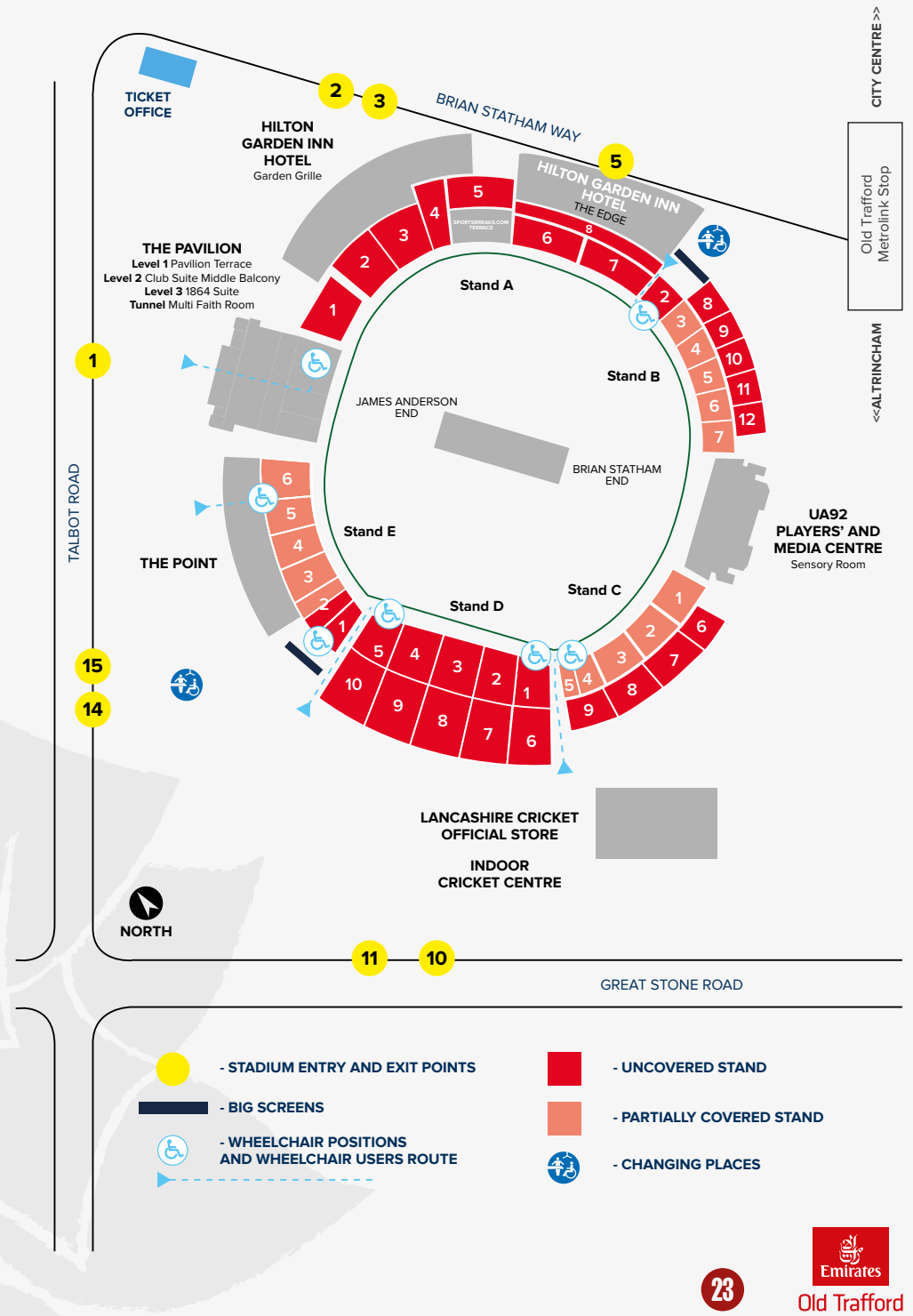
and using our postcode of **M16 0PX**

Further details in regard to on day parking will be listed in the match day guide approximately 48 hours prior to fixture.



Old Trafford

EMIRATES OLD TRAFFORD GROUND PLAN



CODE OF CONDUCT AND GROUND REGULATIONS

Below applies to Emirates Old Trafford and all outdoor venues.

SMOKING POLICY

Smoking in covered areas and stands is not permitted (including e cigarettes and vapes).

PROHIBITED ITEMS

Any objects or clothing bearing political statements or commercial identification intended for ambush marketing, large flags, banners, rattles, fireworks, flares, pyrotechnics, air horns, musical instruments, klaxons, smoke canisters, laser pointers, bottles, glass, cans, cooking devices, poles, knives, blades and other articles or containers - including any which could or might be used as a weapon - or any other item which in the reasonable opinion of the Lancashire Cricket Club could be used as a weapon or cause nuisance to others.

Admission to the Grounds will be denied if a person attempts to gain entry with alcohol.

The importation of any alcohol is prohibited for all events. The consumption of alcohol is permitted only in authorised areas.

ANIMALS

No animals other than assistance dogs are allowed to enter the Grounds. For full terms and conditions of entry please see link below.

TERMS AND CONDITIONS

For full terms and conditions please scan the QR code below.



CLICK HERE

CODE OF CONDUCT

It goes without saying that positive communication and behaviour is expected as being a minimum standard of employment and membership of Lancashire Cricket Club. Mutual respect between staff & Members and fellow Members is acknowledged as standard.

Any breach of this condition may result in an employee being subject to disciplinary action or a Member having their membership suspended.

For full code of conduct please scan the QR code below or request a printed copy from Pavilion reception.



CLICK HERE

FIXTURE LIST

2024 INTERNATIONALS

Test Match

Wednesday 21 - Sunday 25 August ENGLAND MEN v SRI LANKA MEN 11.00AM

Vitality International Men's T20

Sunday 15 September ENGLAND MEN v AUSTRALIA MEN (F) 2.30PM

MEN'S FIRST-CLASS FIXTURES

County Championship

APRIL

Fri 5	Surrey	Emirates Old Trafford	11.00AM
Fri 12	Hampshire	Ageas Bowl	11.00AM
Fri 19	Essex	The Cloud County Ground	11.00AM

MAY

Fri 3	Kent	Emirates Old Trafford	11.00AM
Fri 10	Nottinghamshire	Trent Bridge	11.00AM
Fri 17	Durham	Blackpool Cricket Club	11.00AM
Fri 24	Warwickshire	Emirates Old Trafford	11.00AM

JUNE

Sun 23	Kent	Canterbury	11.00AM
Sun 30	Nottinghamshire	Southport	11.00AM

AUGUST

Thurs 22	Surrey	Kia Oval	11.00AM
Thurs 29	Hampshire	Emirates Old Trafford	11.00AM

SEPTEMBER

Mon 9	Durham	Seat Unique Riverside	10.30AM
Tues 17	Somerset	Emirates Old Trafford	10.30AM
Thurs 26	Worcestershire	New Road	10.30AM

MEN'S T20 MATCHES

Vitality Blast

MAY

Thurs 30	Durham Cricket	Emirates Old Trafford (F)	6.30PM
Fri 31	Worcestershire Rapids	New Road (F)	5.00PM

JUNE

Sun 2	Derbyshire Falcons	Emirates Old Trafford	12.00PM
Fri 7	Birmingham Bears	Emirates Old Trafford (F)	6.30PM
Sun 9	Notts Outlaws	Trent Bridge	2.30PM
Fri 14	Leicestershire Foxes	Upton Steel County Ground (F)	6.30PM
Sun 16	Durham Cricket	Seat Unique Riverside	2.30PM
Thurs 20	Yorkshire Vikings	Headingley (F)	7.05PM

JULY

Fri 5	Northamptonshire Steelbacks	The County Ground (F)	6.30PM
Sun 7	Worcestershire Rapids	Emirates Old Trafford	2.30PM
Thurs 11	Derbyshire Falcons	The Incora County Ground (F)	6.30PM
Fri 12	Yorkshire Vikings	Emirates Old Trafford (F)	7.00PM
Wed 17	Notts Outlaws	Emirates Old Trafford (F)	6.30PM
Fri 19	Northamptonshire Steelbacks	Emirates Old Trafford (F)	6.30PM

THE HUNDRED

Women's and Men's

Date	Home	Away	Venue	Women's Start Time	Men's Start Time
JULY					
Thurs 25	Manchester Originals	Welsh Fire	Emirates Old Trafford	3.00PM	6.30PM
Mon 29	Manchester Originals	Trent Rockets	Emirates Old Trafford	3.00PM	6.30PM
AUGUST					
Thurs 1	Southern Brave	Manchester Originals	Ageas Bowl	3.00PM	6.30PM
Sun 4	Northern Superchargers	Manchester Originals	Headingley	2.30PM	6.00PM
Tues 6	Manchester Originals	Oval Invincibles	Emirates Old Trafford	11.30AM	3.00PM
Fri 9	London Spirit	Manchester Originals	Lords	3.00PM	6.30PM
Sun 11	Manchester Originals	Northern Superchargers	Emirates Old Trafford	2.30PM	6.00PM
Thurs 15	Birmingham Phoenix	Manchester Originals	Edgbaston	3.00PM	6.30PM

To purchase tickets for any of our 2024 fixtures go to lancashirecricket.co.uk/tickets

Fixtures and venues correct at time of print. Any dates and timings are subject to change. (F) - Floodlit.



Old Trafford

HOW TO GET IN TOUCH

MEMBERSHIP OFFICE

Email us at the membership Office on:
membership@lancashirecricket.co.uk

or phone us on:
0161 868 6868 (select Option 1)

The easiest way to contact the membership office is by email.
The team will come back to you as soon as possible.

MEMBERS REPRESENTATIVE GROUP

Email us on:
MRG@lancashirecricket.co.uk

Request Email Address

We regularly send Members updates throughout the season, if you don't currently have an email address on your account and wish to receive email updates please email **membership@lancashirecricket.co.uk** and confirm your membership number, name and email address.



Old Trafford

