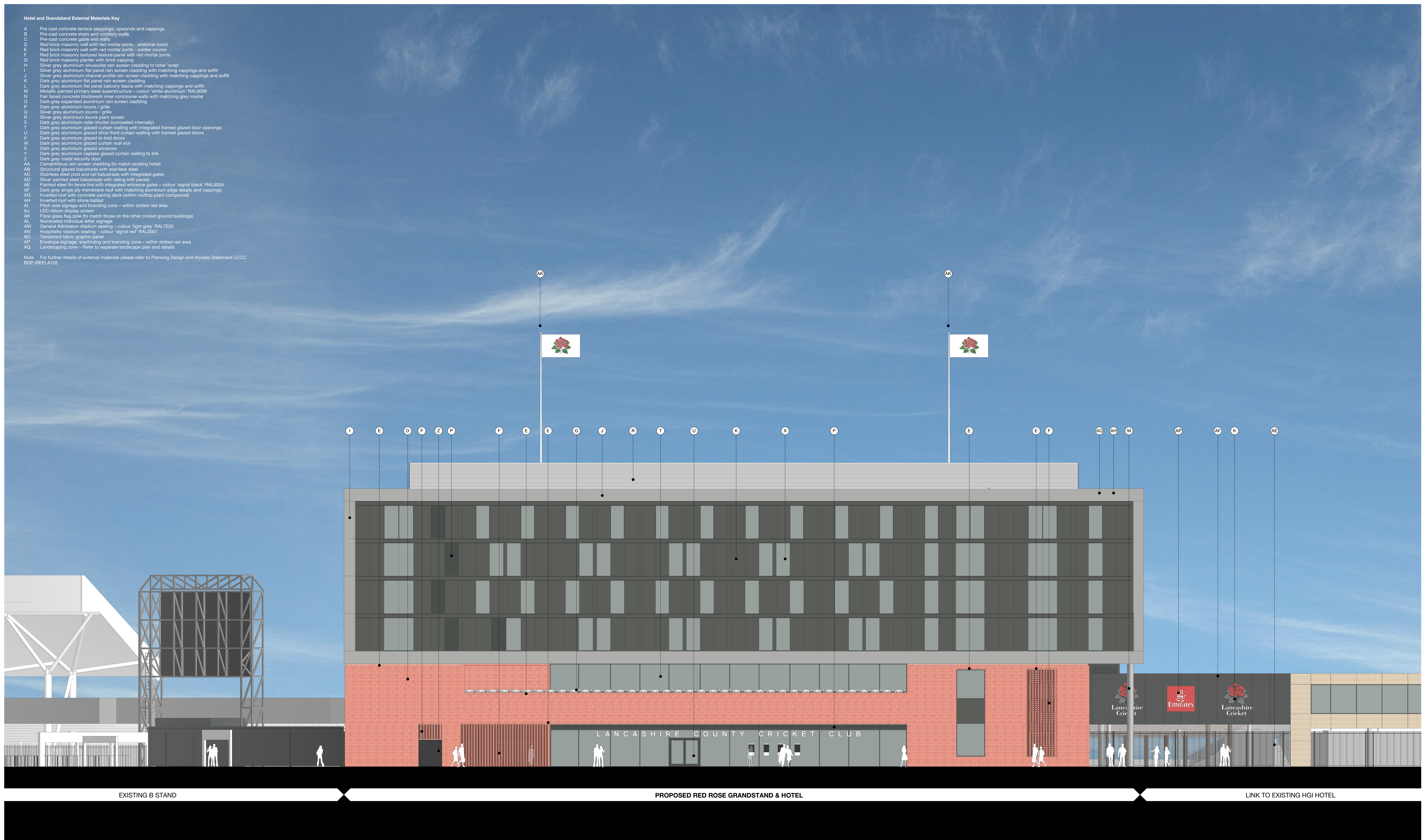


- Hotel and Grandstand External Materials Key**
- A Pre-cast concrete terrace steps, upstands and cappings
 - B Pre-cast concrete stairs and venturi walls
 - C Pre-cast concrete gable end walls
 - D Red brick masonry wall with red mortar joints - stretcher bond
 - E Red brick masonry wall with red mortar joints - soldier course
 - F Red brick masonry textured feature panel with red mortar joints
 - G Red brick masonry planter with brick capping
 - H Silver grey aluminium subsoffit rain screen cladding to hotel 'wrap'
 - I Silver grey aluminium flat panel rain screen cladding with matching cappings and soffit
 - J Silver grey aluminium channel profile rain screen cladding with matching cappings and soffit
 - K Dark grey aluminium flat panel rain screen cladding
 - L Dark grey aluminium flat panel balcony fascia with matching cappings and soffit
 - M Metallic painted primary steel superstructure - colour: white aluminium RAL3006
 - N Fair faced concrete blockwork inner concourse walls with matching grey mortar
 - O Dark grey expanded aluminium rain screen cladding
 - P Dark grey aluminium louvre / grille
 - Q Silver grey aluminium louvre / grille
 - R Silver grey aluminium louvre plant screen
 - S Dark grey aluminium roller shutter (concealed internally)
 - T Dark grey aluminium glazed curtain walling with integrated framed glazed door openings
 - U Dark grey aluminium glazed shop front curtain walling with framed glazed doors
 - V Dark grey aluminium glazed bi-fold doors
 - W Dark grey aluminium glazed curtain wall slot
 - X Dark grey aluminium glazed windows
 - Y Dark grey aluminium capless glazed curtain walling to link
 - Z Dark grey metal security door
 - AA Cementitious rain screen cladding (to match existing hotel)
 - AB Structural glazed balustrade with stainless steel
 - AC Stainless steel post and rail balustrade with integrated gates
 - AD Silver painted steel balustrade with railing infill panels
 - AE Painted steel fin fence line with integrated entrance gates - colour 'signal black' RAL9004
 - AF Dark grey single ply membrane roof with matching aluminium edge details and cappings
 - AG Inverted roof with concrete paving deck (within rooftop plant compound)
 - AH Inverted roof with stone ballast
 - AI Pitch side signage and branding zone - within dotted red area
 - AJ LED ribbon display screen
 - AK Fibre glass flag pole to match those on the other cricket ground buildings
 - AL Illuminated individual letter signage
 - AM General Admission stadium seating - colour 'light grey' RAL7035
 - AN Hospitality stadium seating - colour 'signal red' RAL3001
 - AO Tensored fabric graphic panel
 - AP Envelope signage, wayfinding and branding zone - within dotted red area
 - AQ Landscaping zone - Refer to separate landscape plan and details
- Note For further details of external materials please refer to Planning Design and Access Statement LCCC BDP (R2) A102



(0-) Z1 Elevation - East - General Arrangement
1 : 100

<p><small>BUILDING DESIGN PARTNERSHIP SHALL HAVE NO RESPONSIBILITY FOR ANY USE MADE OF THIS DOCUMENT OTHER THAN THAT WHICH IT IS PROVIDED AND ISSUED.</small></p> <p><small>ALL DIMENSIONS SHOULD BE CHECKED ON SITE.</small></p> <p><small>DO NOT SCALE FROM THIS DRAWING.</small></p> <p><small>ANY DRAWING ERRORS OR OMISSIONS SHOULD BE BROUGHT TO THE ATTENTION OF BUILDING DESIGN PARTNERSHIP AT THE ADDRESS SHOWN BELOW.</small></p> <p><small>DRAWINGS SHALL BE READ IN CONJUNCTION WITH THE FOLLOWING BEFORE WORK COMMENCES:</small></p> <ul style="list-style-type: none"> - THE CONSTRUCTION SPECIFICATIONS - THE BDP RISK SERIES OF DRAWINGS - THE PROJECT CONSTRUCTION REGISTER 	<table border="1" style="width: 100%; border-collapse: collapse;"> <tr> <td style="font-size: 8px;">REV</td> <td style="font-size: 8px;">DATE</td> <td style="font-size: 8px;">BY</td> <td style="font-size: 8px;">CHKD</td> <td style="font-size: 8px;">DESCRIPTION</td> </tr> <tr> <td>01</td> <td>26/02/21</td> <td>AD</td> <td>AD</td> <td>ISSUED FOR PERMIT</td> </tr> <tr> <td>02</td> <td>26/02/21</td> <td>AD</td> <td>AD</td> <td>ISSUED FOR CONSTRUCTION</td> </tr> </table>	REV	DATE	BY	CHKD	DESCRIPTION	01	26/02/21	AD	AD	ISSUED FOR PERMIT	02	26/02/21	AD	AD	ISSUED FOR CONSTRUCTION	<p style="font-size: 10px; text-align: center;">NOTES</p>		<p style="font-size: 8px;">11 Ducie Street PO Box 65 Piccadilly Basin Manchester M60 3AA United Kingdom T +44 (0)161 628 2200 www.bdp.com</p>	<p style="font-size: 12px; font-weight: bold; color: red;">BDP.</p> <p style="font-size: 8px;">Lancashire County Cricket Club</p> <p style="font-size: 8px;">P3000511 Commercial In Confidence</p> <p style="font-size: 8px;">Red Rose Grandstand & Hotel - East Elevation</p> <p style="font-size: 8px;">26/02/21</p> <p style="font-size: 8px;">LCCC-BDP-Z1-XX-DR-A-(0)-1102 P01</p>
REV	DATE	BY	CHKD	DESCRIPTION																
01	26/02/21	AD	AD	ISSUED FOR PERMIT																
02	26/02/21	AD	AD	ISSUED FOR CONSTRUCTION																